



GMT MONTHLY MEMBERSHIP PROGRESS REPORT

Results as of: 11/30/2019

Multiple District 18

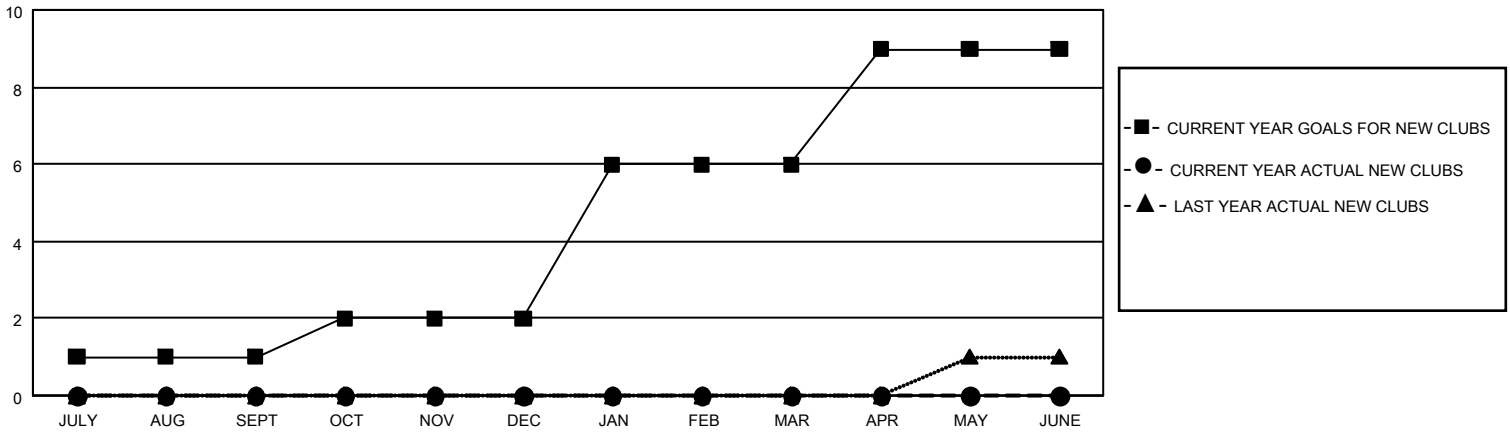
LOCATION: GEORGIA

GMT: OPEN

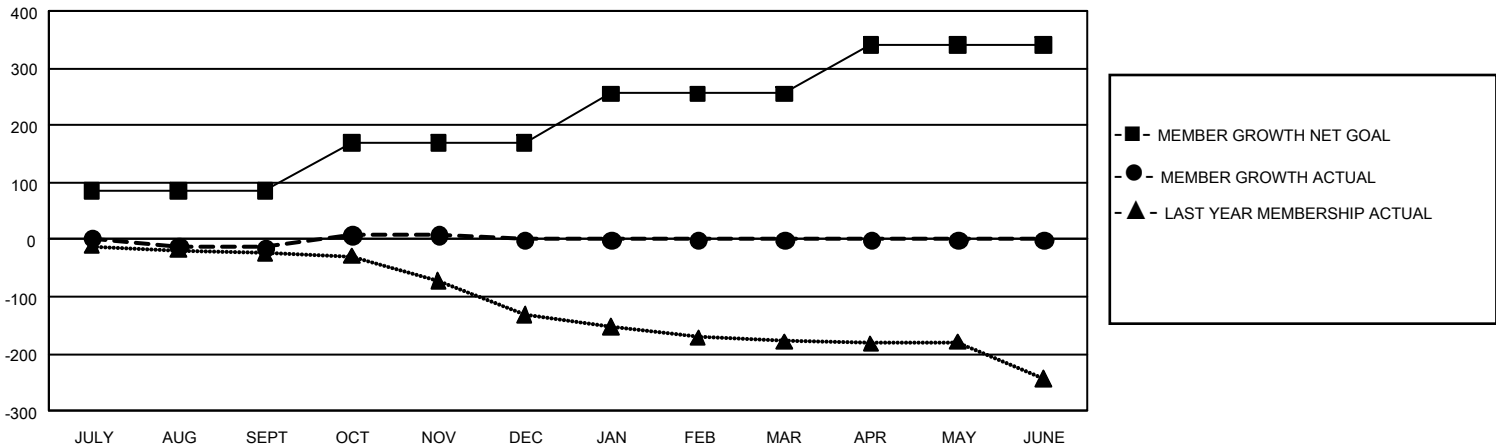
GMT CA 1

| Clubs | | | | Members | | | |
|-----------------------|---------------|-----------|---------------|-----------------------|------------------------|----------------------|--|
| RESULTS FOR 2019-2020 | | | | RESULTS FOR 2019-2020 | | | |
| QUARTER | NEW CLUB GOAL | NEW CLUBS | DROPPED CLUBS | QUARTER | MEMBER GROWTH NET GOAL | MEMBER GROWTH ACTUAL | DROPPED MEMBERS ACTUAL (including transfers) |
| JULY/AUG/SEPT | 3 | 0 | 1 | JULY/AUG/SEPT | 255 | 86 | 91 |
| OCT/NOV/DEC | 3 | 0 | 1 | OCT/NOV/DEC | 255 | 87 | 64 |
| JAN/FEB/MAR | 12 | 0 | 0 | JAN/FEB/MAR | 255 | 0 | 0 |
| APR/MAY/JUNE | 9 | 0 | 0 | APR/MAY/JUNE | 255 | 0 | 0 |

GOALS AND ACTUAL NEW CLUBS CUMULATIVE



GOALS AND ACTUAL MEMBERS CUMULATIVE



| | | |
|---|---|--|
| DROPPED CLUBS: 2 | 71 CLUBS OF 209 ADDED 1 OR MORE NEW MEMBERS | GENDER DISTRIBUTION MALE 3,143 (67.04%) FEMALE 1,545 (32.96%) |
| DROPPED MEMBERS DECEASED 28 CLUB CANCELLED 2 OTHER 125 <hr/> TOTAL 155 | CLICK HERE FOR CUMULATIVE MEMBERSHIP DATA | TOTAL FAMILY UNIT MEMBERS 873 FAMILY MEMBERS PAYING HALF DUES 449 |